

2 of 2 8-83

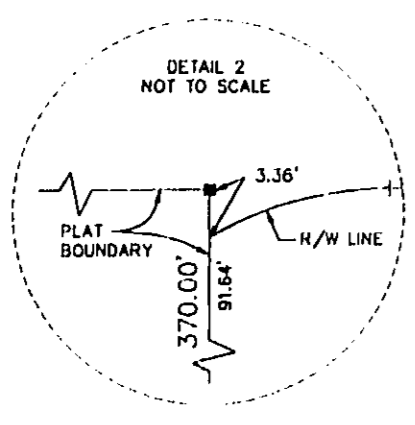
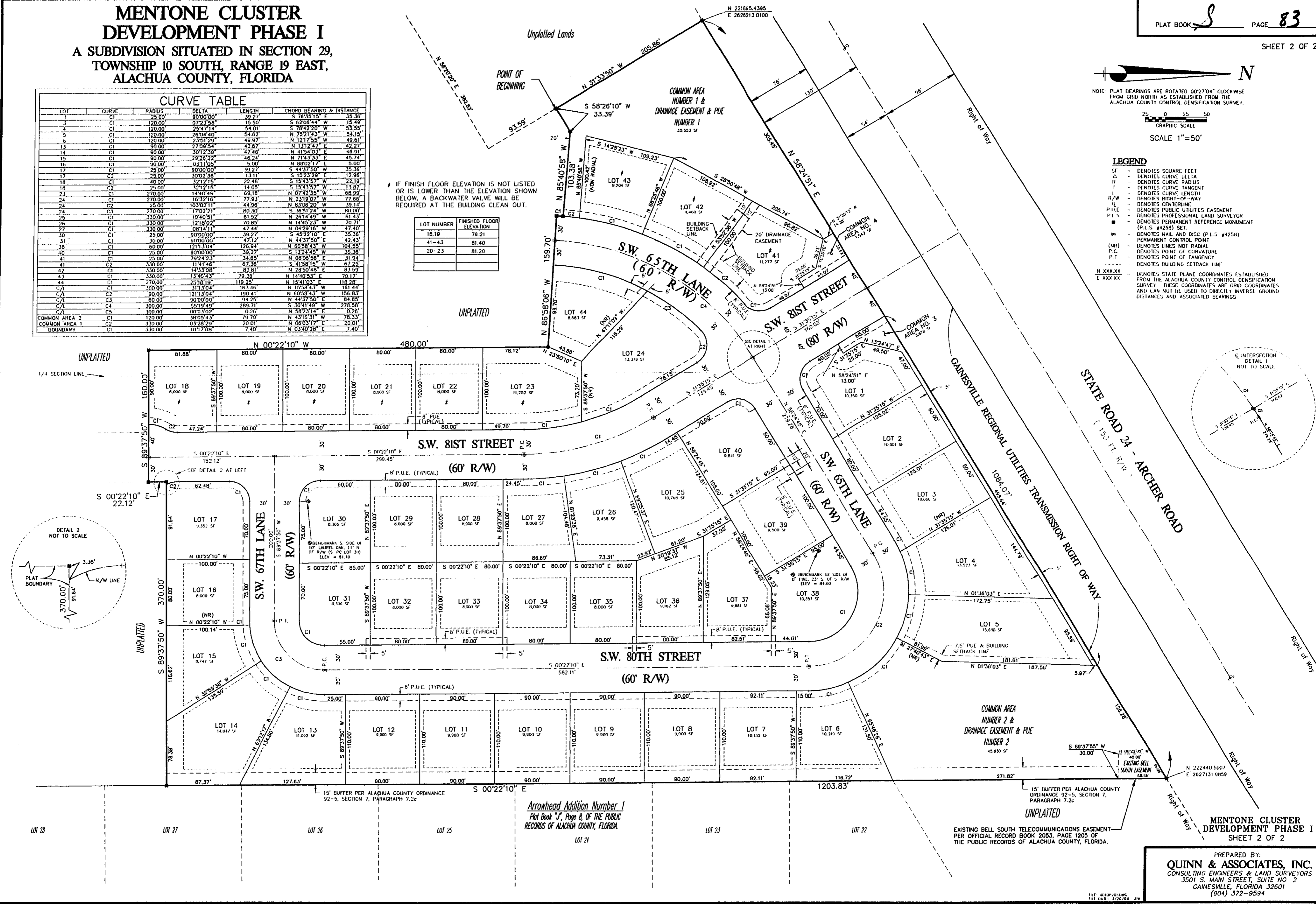
MENTONE CLUSTER DEVELOPMENT PHASE I

A SUBDIVISION SITUATED IN SECTION 29,
TOWNSHIP 10 SOUTH, RANGE 19 EAST,
ALACHUA COUNTY, FLORIDA

LOT	CURVE	RADIUS	DELTA	LENGTH	CHORD BEARING & DISTANCE
1	C1	25.00'	90°00'00"	39.27'	S 78°35'15" E 35.36'
3	C1	120.00'	072°35'58"	15.50'	S 82°00'44" W 15.49'
4	C1	120.00'	254°17'14"	54.01'	S 78°42'20" W 53.55'
5	C1	120.00'	280°44'40"	54.62'	N 75°21'43" W 54.15'
9	C1	120.00'	238°12'29"	49.97'	N 121°17'55" W 49.61'
13	C1	90.00'	270°00'00"	42.87'	N 131°24'47" E 42.27'
14	C1	90.00'	301°23'39"	47.48'	N 41°54'03" E 46.91'
15	C1	90.00'	292°26'22"	46.24'	N 71°43'53" E 45.74'
16	C1	90.00'	031°11'05"	5.00'	N 89°02'17" E 5.00'
17	C1	25.00'	90°00'00"	19.27'	S 44°37'50" W 35.36'
17	C2	25.00'	309°23'36"	13.11'	S 15°23'29" E 12.96'
18	C1	40.00'	321°21'15"	22.48'	S 15°43'57" W 22.19'
18	C2	25.00'	321°21'15"	14.05'	S 15°43'57" W 13.87'
23	C1	270.00'	144°04'49"	69.18'	N 07°42'35" W 68.99'
23	C2	270.00'	163°22'18"	77.53'	N 23°19'57" W 77.66'
24	C1	270.00'	103°32'11"	44.98'	N 83°08'20" W 39.14'
24	C2	270.00'	170°27'21"	80.30'	S 36°51'24" W 80.00'
25	C1	330.00'	109°40'51"	61.52'	N 26°14'49" W 61.43'
26	C1	330.00'	121°01'02"	70.85'	N 14°49'34" W 70.71'
27	C1	330.00'	081°41'11"	47.44'	N 04°29'16" W 47.40'
30	C1	25.00'	90°00'00"	39.27'	S 45°22'10" E 35.36'
31	C1	30.00'	00°00'00"	47.12'	N 44°37'50" E 42.43'
38	C1	60.00'	121°13'04"	126.94'	N 60°58'43" W 104.52'
40	C1	25.00'	90°00'00"	39.27'	S 13°24'45" W 35.36'
41	C1	25.00'	79°24'23"	34.65'	N 08°06'56" E 31.94'
41	C2	330.00'	114°14'41"	67.36'	S 41°58'15" W 67.24'
42	C1	330.00'	143°13'08"	83.81'	N 28°50'48" E 83.59'
43	C1	330.00'	134°46'43"	79.36'	N 14°40'43" E 79.17'
44	C1	300.00'	233°18'19"	119.23'	N 184°03'41" W 118.26'
C/L	C1	300.00'	311°13'04"	163.46'	N 15°58'43" W 161.44'
C/L	C2	90.00'	121°13'04"	190.41'	N 60°58'43" W 156.83'
C/L	C3	60.00'	90°00'00"	34.25'	S 13°24'45" W 31.94'
C/L	C4	300.00'	081°41'11"	289.71'	S 30°41'49" W 278.58'
C/L	C5	300.00'	00°00'00"	0.26'	N 68°23'14" E 0.26'
COMMON AREA 2	C1	120.00'	38°05'43"	79.79'	N 43°16'31" W 78.53'
COMMON AREA 1	C1	330.00'	01°29'23"	20.01'	N 06°03'17" E 20.01'
BOUNDARY	C1	330.00'	01°17'08"	7.40'	N 03°40'28" E 7.40'

IF FINISH FLOOR ELEVATION IS NOT LISTED OR IS LOWER THAN THE ELEVATION SHOWN BELOW, A BACKWATER VALVE WILL BE REQUIRED AT THE BUILDING CLEAN OUT.

LOT NUMBER	FINISHED FLOOR ELEVATION
18-19	79.21
41-43	81.40
20-23	81.20



PREPARED BY:
QUINN & ASSOCIATES, INC.
CONSULTING ENGINEERS & LAND SURVEYORS
3501 S. MAIN STREET, SUITE NO. 2
GAINESVILLE, FLORIDA 32601
(904) 372-9594

S